

**BROTHER, BROTHER & SONS**

presents

# ALEDIN AR



## Stunning performance

LED CONTROL TECHNOLOGY FROM BROTHER, BROTHER & SONS

[WWW.BROTHERS-SONS.DK](http://WWW.BROTHERS-SONS.DK)



# ALEDIN AR



## **LED retrofit kit for Arri ST-1 Fresnel.**

**The Aledin AR LED retrofit kit is a new powerful back end light engine from BB&S designed for mounting on Arri ST 1. It gives a stunning performance by up to 80 degree flood and a very smooth output. Combined with a remarkably low power consumption and the eco-friendly reuse of the Arri Fresnel, Aledin AR is an excellent choice for broadcast studios, photo shoots, film production etc.**

## **From tungsten to LED in 2 minutes**

Want to get rid of your old power consuming tungsten unit? No problem! Just follow the step-by-step guide supplied with the retro fit kit, remove the tungsten parts, install the Aledin AR LED retrofit kit and you' re ready to go.

## **No flicker and ultra-smooth dimming**

Aledin AR eliminates the flicker often seen when using other LED luminaires in television and film, and the smooth dimming starting from or ending at 0 per cent also makes Aledin AR an ideal choice for theatre use.

## **Upgrade your rental stock and maximize your ROI**

Check your studio's power bill and you might get a shock. And the fact that most of the power is used to warm up the studio only to cool it down again with expensive air conditioning might shock you even further.

By changing equipment to LED your initial costs will be made up or even lowered in reduced energy and lamp replacement costs.

**“The Value of an idea  
lies in the using of it.”**

**Thomas Edison**



- Clean cut with barn doors as always
- Super-fast strobe speed and duration
- Silent operation
- Power saving long LED life
- High reliability using BB&S proven technology
- Very powerful
- PowerCon in
- DMX 512 in/out for daisy-chaining
- Excellent soft shadow rendering
- High reliability
- LED engine control adds very little weight to the unit
- No more heavy dimmers and heavy copper
- Flicker-free dimming, can even be used for high speed video lighting
- Totally smooth theatrical type dimming all the way to zero
- 50,000 hours LED life with 70% lumen maintenance
- Very little maintenance required over time
- Internal dimmer controlled by DMX 512
- Long filter life
- Reduced CO2 emission = smaller carbon footprint for your business

**Aledin AR is available in either 3200 or 5600 kelvin.**

**Aledin AR ships as a complete LED upgrade kit.**

**POWER:**

Switchmode power supply

AC Power: 100 – 240 V nominal, 50/60 Hz

Max. power consumption: 110 W.

Standby power: 5,5 W.

1 Amp @ 110V / 0,5 Amp @ 240V

Powercon IN and OUT for daisy chaining

Power factor @ 100%, 230 volts = 0.97

Power factor @ 100%, 115 volts = 1.0

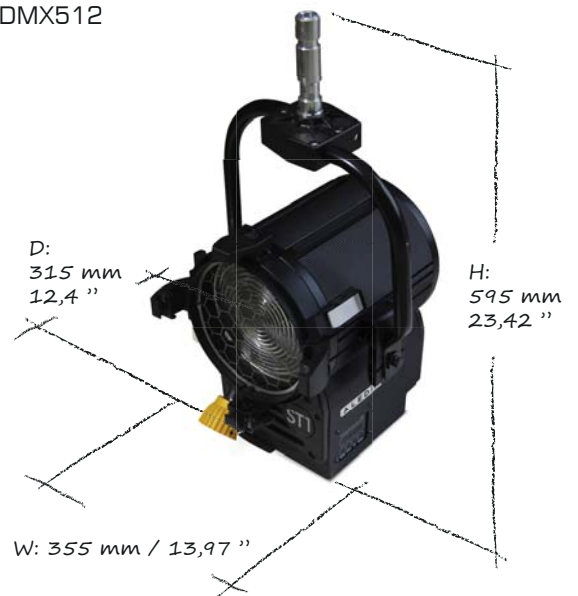
**LAMP:**

High quality Cold LED array 5600K, CRI min. 72

High quality Warm LED array 3200K, CRI min. 80

**CONTROL:**

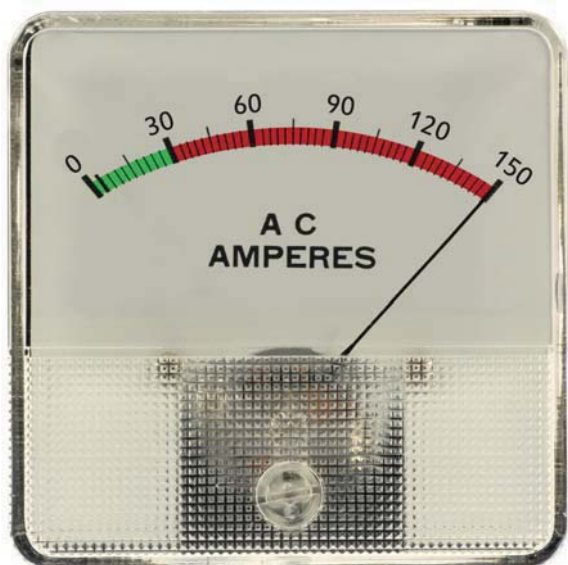
DMX512



## Where to use Aledin AR

- Broadcast studios
- Photo shoots
- Film and video production
- Theatres
- Concerts
- Museums
- Churches
- Science centres
- Exhibitions
- Trades
- Fashion shows
- Events
- Venues
- On location
- Display lighting

keep it green



before



after

Founded in 1999 and headquartered in Copenhagen, Denmark, Brother, Brother & Sons specify, develop, produce and manufacture high-end LED lighting for the entertainment business around the world.

We work closely with an international network of distributors and are represented in Europe, U.S, Latin America, Australia and Asia.

For more information please visit [www.brothers-sons.dk](http://www.brothers-sons.dk)

MADE IN DENMARK FOR LIGHTING PEOPLE BY LIGHTING PEOPLE



[WWW.BROTHERS-SONS.DK](http://WWW.BROTHERS-SONS.DK)

TEL.: +45 70 27 42 41 - MAIL: [BROTHERS@BROTHERS-SONS.DK](mailto:BROTHERS@BROTHERS-SONS.DK)