

Aledin Software upload manual

INDEX

Page 1 - Installation

Page 2 - Uploading new software to the Uploader

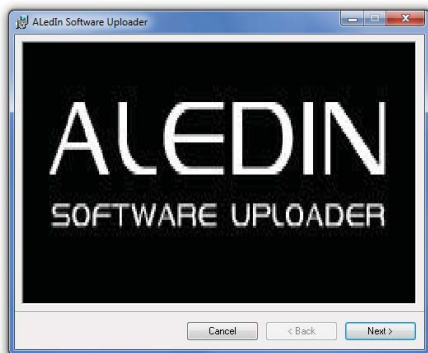
Page 3 - Uploading new software to the Aledin

Installation

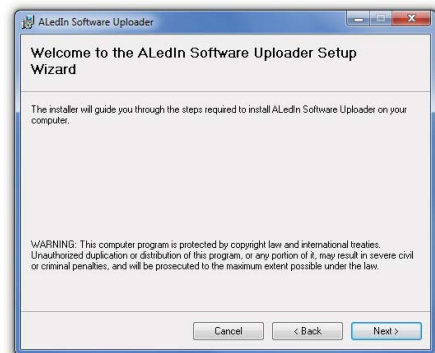
Open the folder "Aledin software files"

Inside should be two files: setup.exe and Software Uploader Tool.msi, both files are needed for installation of the software

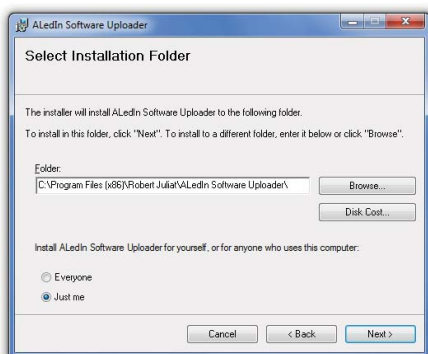
Run setup.exe



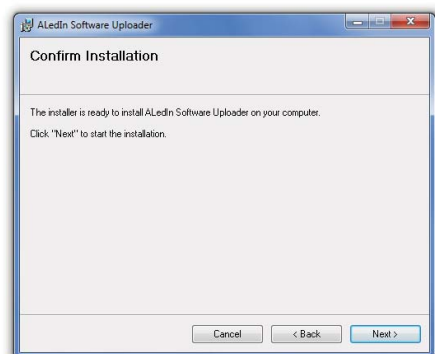
1. Click "Next"



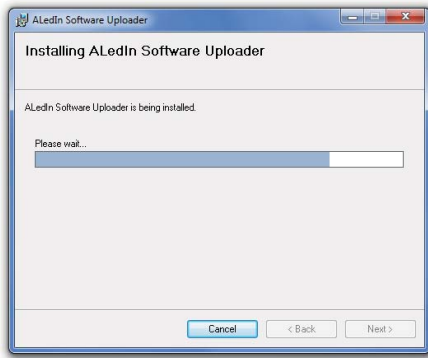
2. Click "Next"



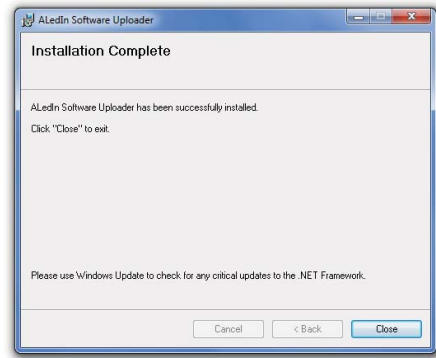
3. Select destination and Click "Next"



4. Click "Next"



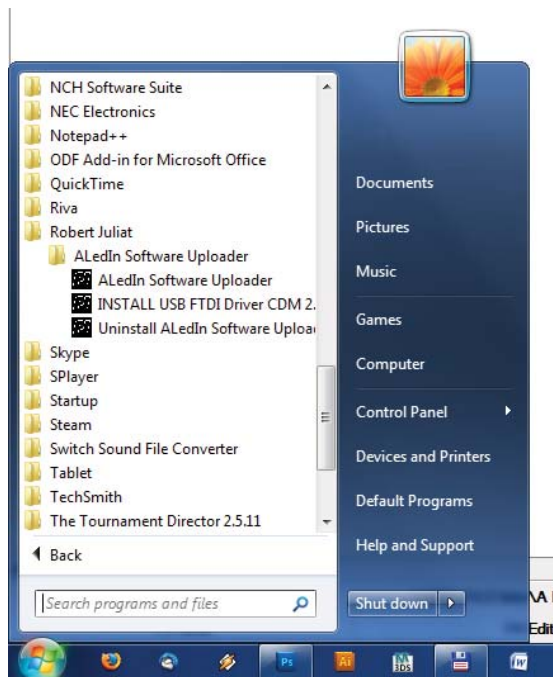
5. The installation will begin



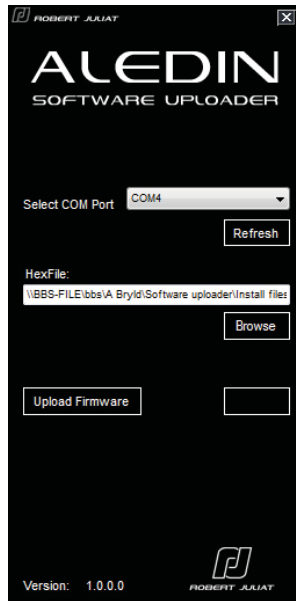
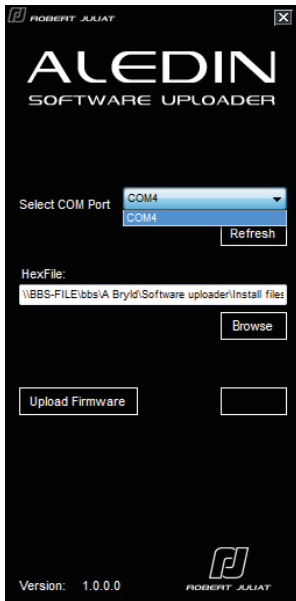
4. The installation has finished. Click "Close"

Uploading new software to the uploader

1. Connect the Uploader to a USB port.

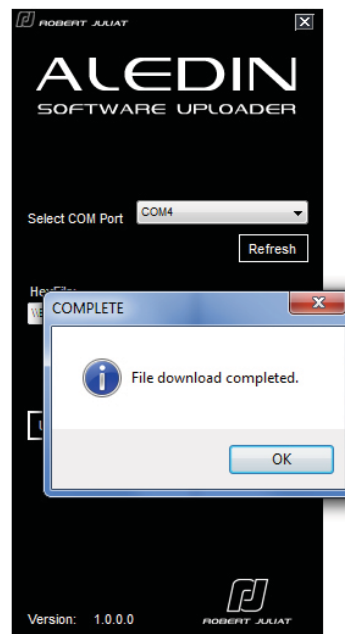
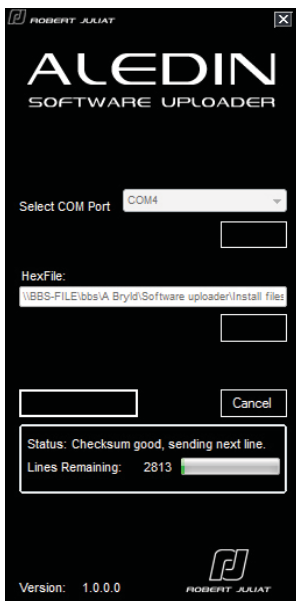


2. a: If windows does not have the required drivers for the Uploader: Run "Install USB FTDI Driver"
b: If windows recognizes the uploader: Start the "AledIn Software Uploader"



3. If a COM Port does not show up in the "Select COM Port", click the refresh button and select the COM Port.

4. New software files are Hex files and located in the "HEX file" folder. Select the appropriate Hex file and click "Upload Firmware"



5. The upload to the Uploader will start. The following will be displayed: Status, "Lines Remaining" countdown and a Progress bar. The 4 chasing LEDs on the Uploader will turn off during software upload.

6. When done uploading, click OK, when the "File download completed" dialogue is shown. The 4 LEDs on the Uploader will flash once and then resume the chase.

Uploading new software to the Aledin

1. Make sure the Aledin is NOT powered on.
2. Connect the Uploader to a USB port and check that the power LED is on and that the 4 LEDs are running their chase.
3. Connect the Aledin to the Uploader with a DMX 512 cable from the Uploader's DMX OUT to the Aledin's DMX IN.
4. Turn the Aledin on.
5. The Aledin display will read "SYnC"
6. As upload starts the display show a count from "P1", "P2", "P3" up to "P61"
7. When the Aledin successfully has received the new software, the display will show the DMX address again.
8. Disconnect the dmx cable and turn the Aledin off.
9. Turn the Aledin back on and check the display for the correct software version.