

Light efficiency:

60 Lumen/Watt

Light quality:

CRI: 91,1

Color temperature:

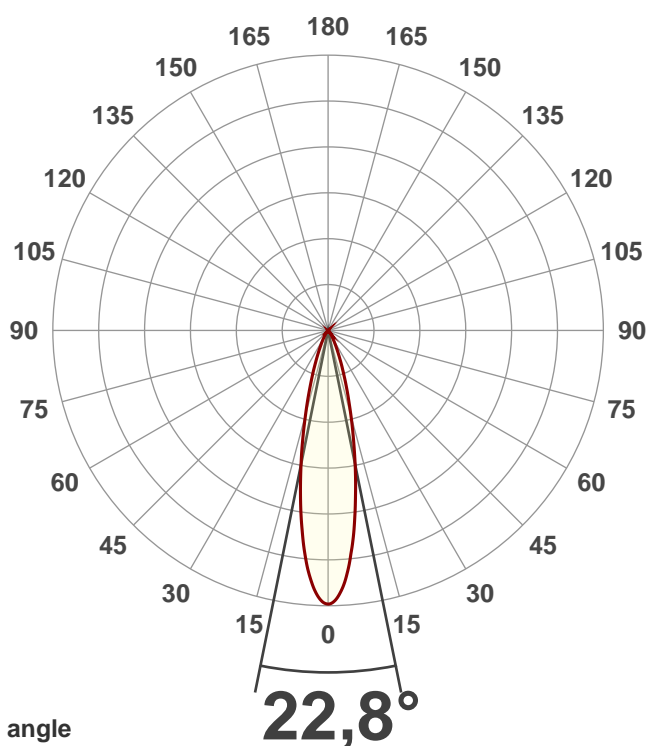
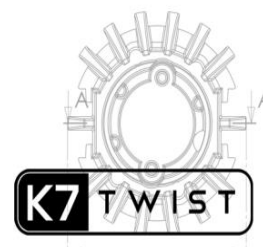
4085 K

Output: 188 lm

Peak: 882 cd

Power: 3,2 W

3,00V @ 1,05A



Beam angle

22,8°

Product name:

K7 4000K _Medium_ 90 0.5 res

Date and time:

25-01-2018 13:05:26

Color

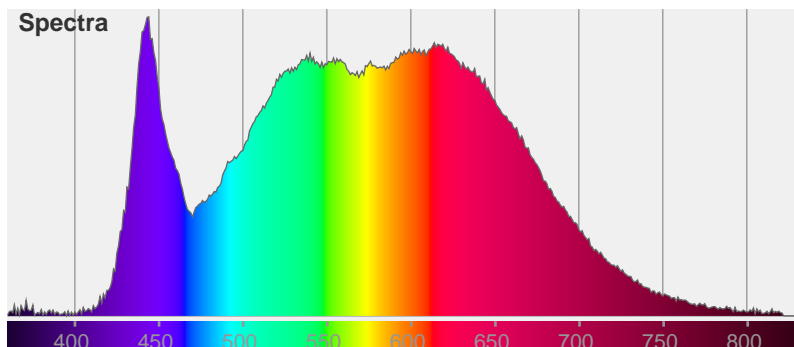


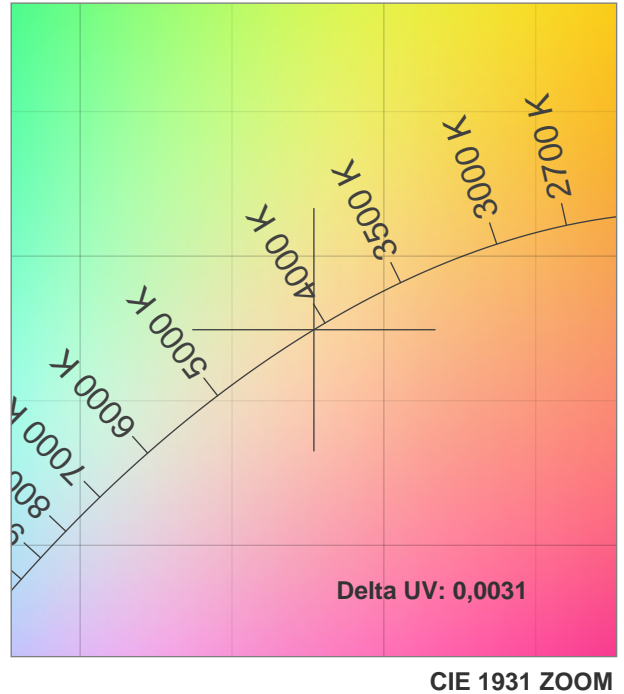
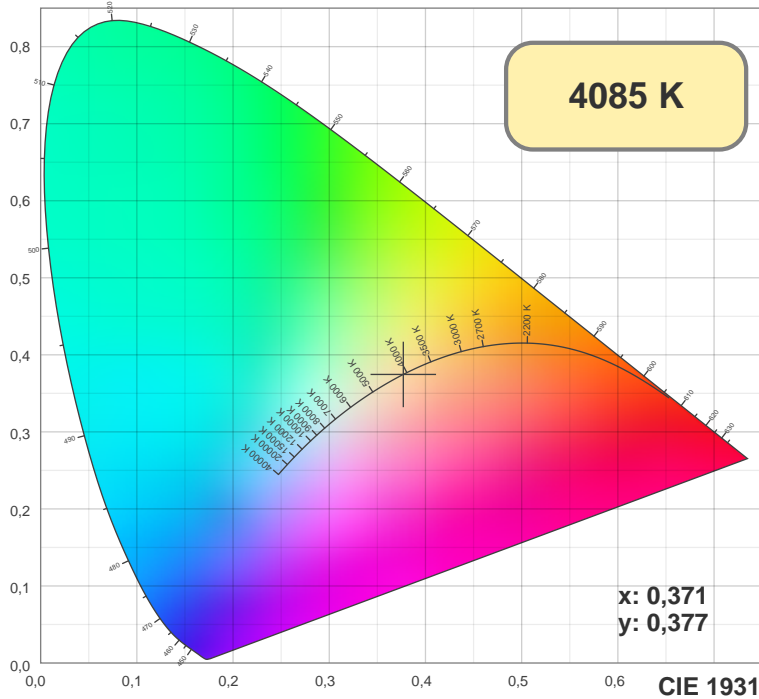
CIE1931

x: 0,371

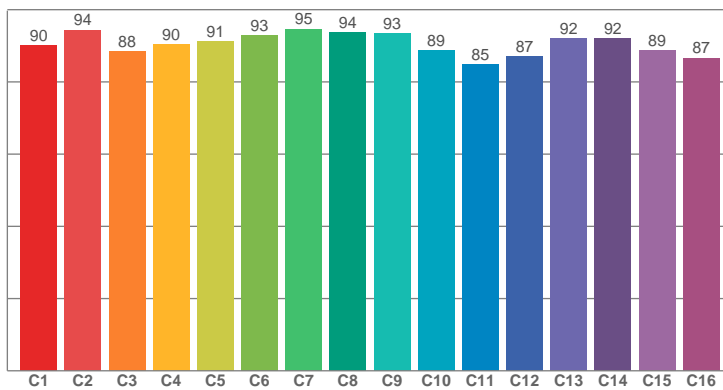
y: 0,377

Spectra

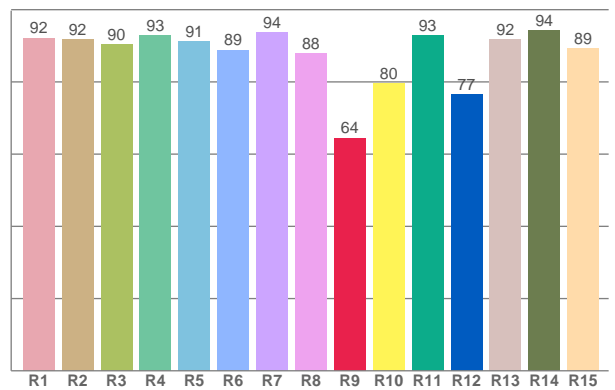




TM30: 90,5



CRI: 91,1 (R1-R8)



CRI R values, only R1-R8 are used to calculate final CRI value

R1	R2	R3	R4	R5	R6	R7	R8	R9	R10	R11	R12	R13	R14	R15
92,18	91,77	90,41	92,83	91,19	88,82	93,64	87,90	64,48	79,65	92,81	76,51	91,70	94,23	89,22

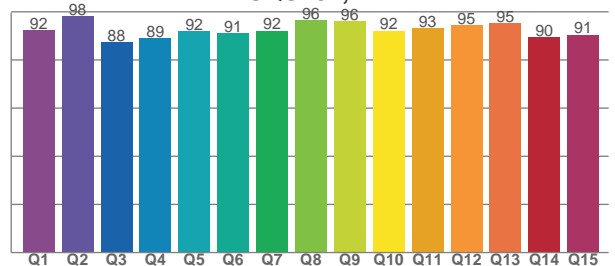
TM30 C values, 16 binned values out of total of 99 C values

C1	C2	C3	C4	C5	C6	C7	C8	C9	C10	C11	C12	C13	C14	C15	C16
90,13	94,42	88,47	90,39	91,18	92,96	94,65	93,77	93,34	88,65	84,87	87,00	92,08	91,95	88,63	86,61

CQS Q values

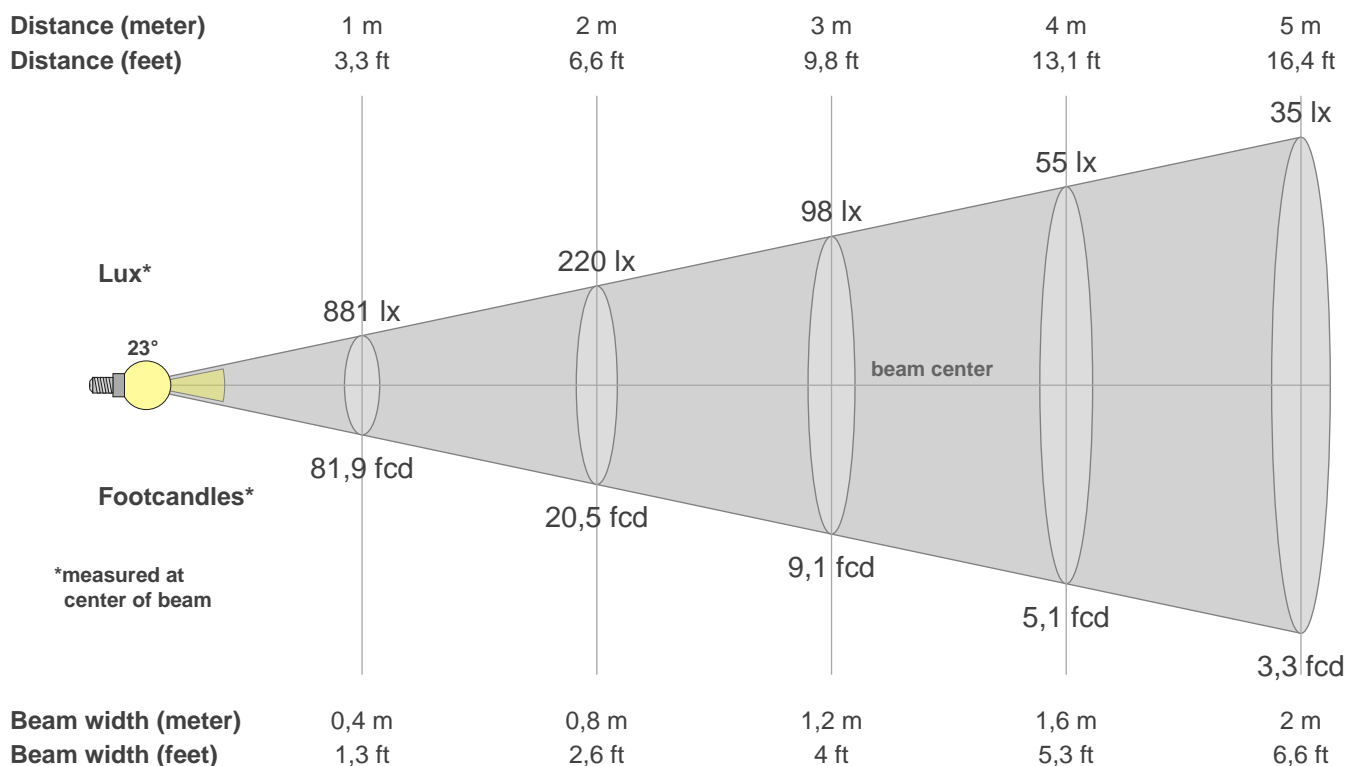
Q1	Q2	Q3	Q4	Q5	Q6	Q7	Q8	Q9	Q10	Q11	Q12	Q13	Q14	Q15
92,23	98,21	87,57	89,13	91,97	91,30	92,20	96,43	96,24	92,21	93,30	94,57	95,19	89,51	90,51

CQS: 92,2



Color parameters

CCT	CRI	CRI R9	TM30 Rf	TM30 Rg	CQS	x	y	u	v	Duv
4085 K	91,1	64,5	90,5	100,8	92,2	0,4	0,4	0,2	0,3	0,0031



Intensities in 0° c-plane

0°	2°	4°	6°	8°	10°	12°	14°	16°	18°	20°	22°	24°	26°	28°	30°	32°	34°	36°	38°
881	861	804	716	615	510	412	324	249	190	143	108	80	59	44	33	24	18	13	10
100%	98%	91%	81%	70%	58%	47%	37%	28%	22%	16%	12%	9%	7%	5%	4%	3%	2%	2%	1%

Intensities in 0° c-plane

0°	2°	4°	6°	8°	10°	12°	14°	16°	18°	20°	22°	24°	26°	28°	30°	32°	34°	36°	38°
881	861	804	716	615	510	412	324	249	190	143	108	80	59	44	33	24	18	13	10
100%	98%	91%	81%	70%	58%	47%	37%	28%	22%	16%	12%	9%	7%	5%	4%	3%	2%	2%	1%

Intensities in 180° c-plane

0°	2°	4°	6°	8°	10°	12°	14°	16°	18°	20°	22°	24°	26°	28°	30°	32°	34°	36°	38°
881	861	804	721	619	513	412	321	245	183	138	101	74	55	41	30	23	17	13	9
100%	98%	91%	82%	70%	58%	47%	36%	28%	21%	16%	11%	8%	6%	5%	3%	3%	2%	1%	1%

Intensities in 180° c-plane

0°	2°	4°	6°	8°	10°	12°	14°	16°	18°	20°	22°	24°	26°	28°	30°	32°	34°	36°	38°
881	861	804	721	619	513	412	321	245	183	138	101	74	55	41	30	23	17	13	9
100%	98%	91%	82%	70%	58%	47%	36%	28%	21%	16%	11%	8%	6%	5%	3%	3%	2%	1%	1%

Beam angle 50%	Field angle 10%	Cutoff angle 2,5%	Intensity ratio in 120° cone	Intensity ratio in 90° cone
22,8°	46,2°	64,9°	100,0%	99,9%