

Light efficiency:

56 Lumen/Watt

Light quality:

CRI: 91,2

Color temperature:

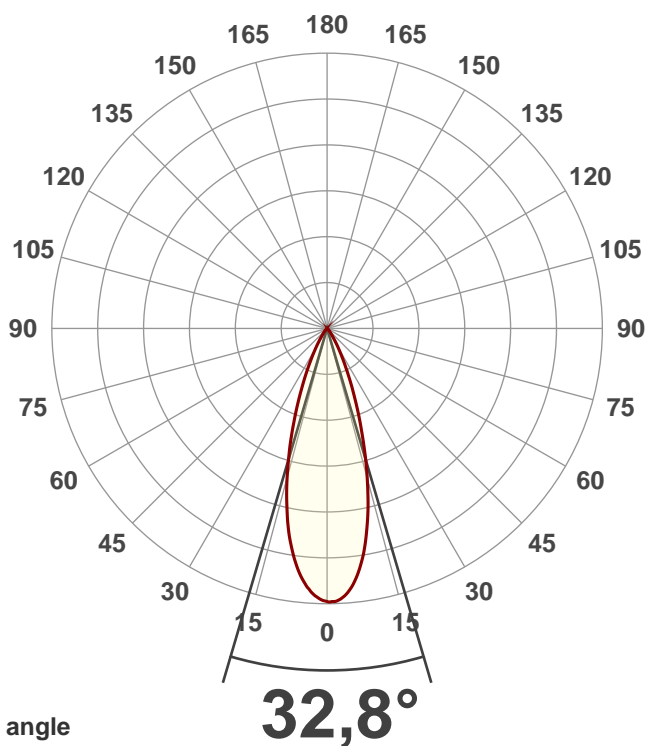
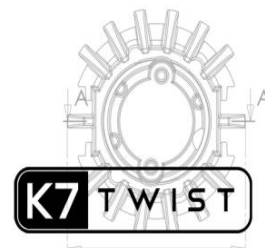
4097 K

Output: 176 lm

Peak: 501 cd

Power: 3,2 W

3,00V @ 1,05A



Beam angle

32,8°

Product name:

K7 4000K _Wide_ 90 0.5 res

Date and time:

25-01-2018 13:08:37

Color

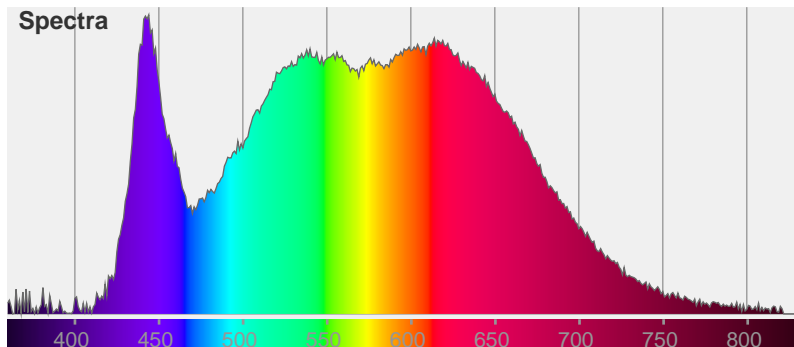


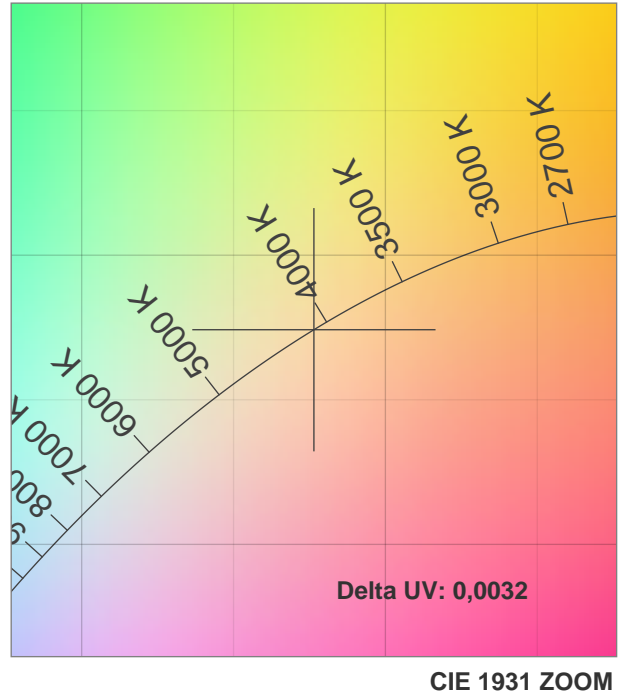
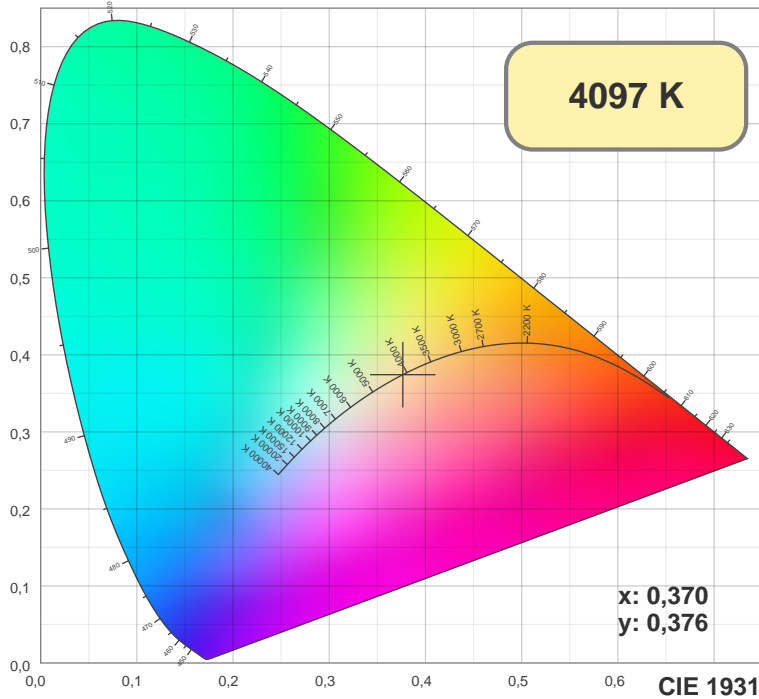
CIE1931

x: 0,370

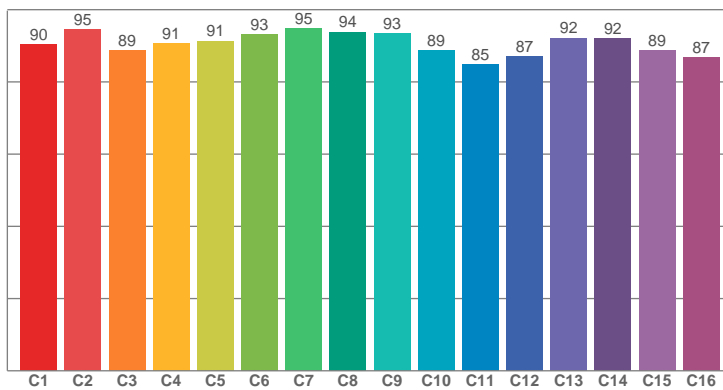
y: 0,376

Spectra

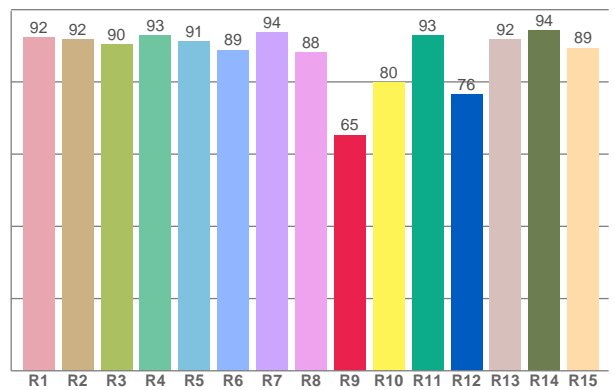




TM30: 90,6



CRI: 91,2 (R1-R8)



CRI R values, only R1-R8 are used to calculate final CRI value

R1	R2	R3	R4	R5	R6	R7	R8	R9	R10	R11	R12	R13	R14	R15
92,33	91,82	90,40	92,93	91,31	88,89	93,76	88,26	65,32	79,79	92,86	76,46	91,82	94,23	89,45

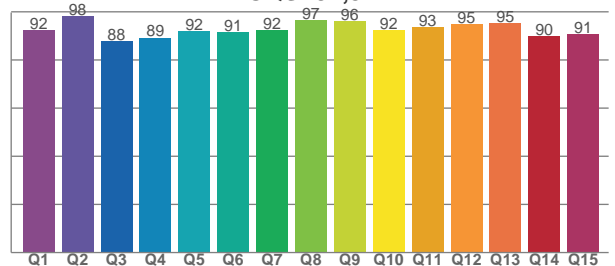
TM30 C values, 16 binned values out of total of 99 C values

C1	C2	C3	C4	C5	C6	C7	C8	C9	C10	C11	C12	C13	C14	C15	C16
90,32	94,59	88,79	90,64	91,36	93,10	94,78	93,85	93,41	88,75	84,94	87,10	92,19	92,08	88,79	86,70

CQS Q values

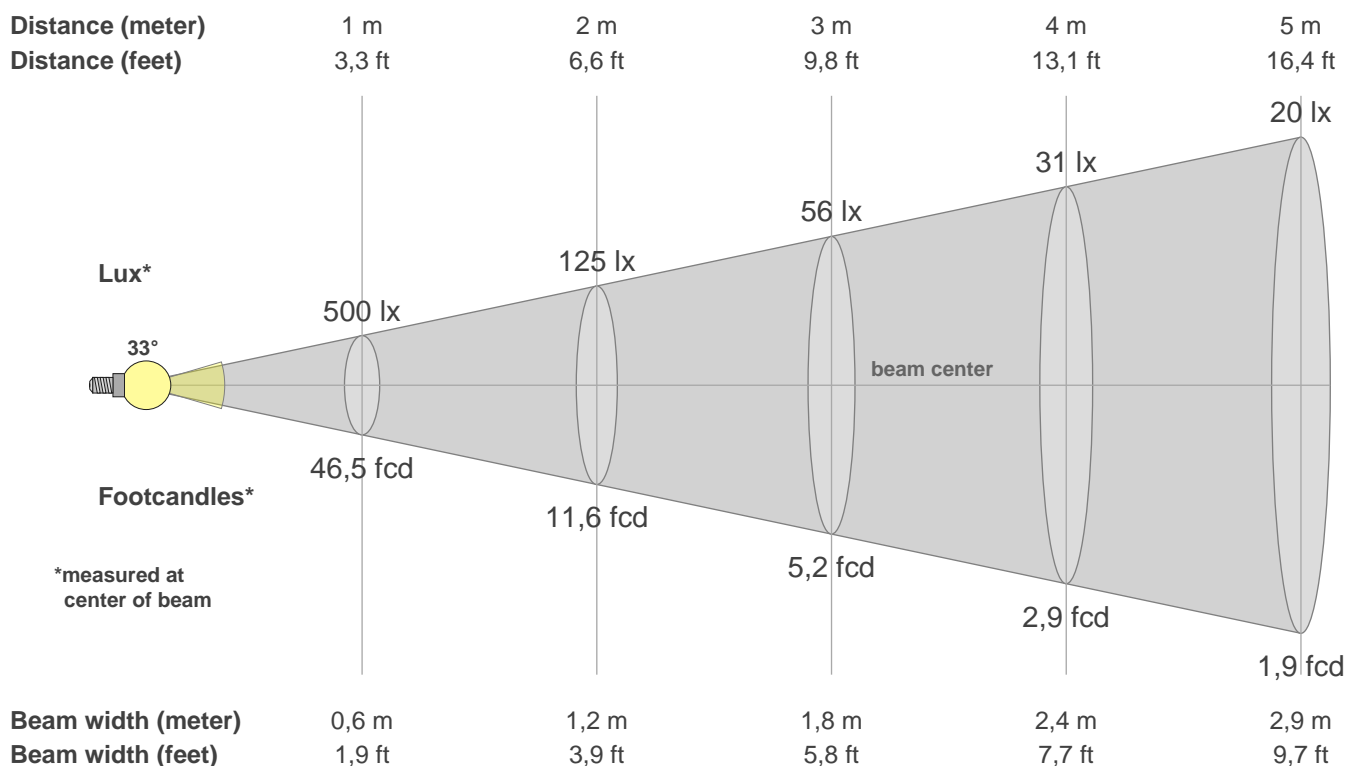
Q1	Q2	Q3	Q4	Q5	Q6	Q7	Q8	Q9	Q10	Q11	Q12	Q13	Q14	Q15
92,49	98,22	87,68	89,28	92,11	91,43	92,32	96,55	96,25	92,36	93,48	94,75	95,37	89,81	90,79

CQS: 92,3



Color parameters

CCT	CRI	CRI R9	TM30 Rf	TM30 Rg	CQS	x	y	u	v	Duv
4097 K	91,2	65,3	90,6	100,7	92,3	0,4	0,4	0,2	0,3	0,0032



Intensities in 0° c-plane

0°	2°	4°	6°	8°	10°	12°	14°	16°	18°	20°	22°	24°	26°	28°	30°	32°	34°	36°	38°
500	499	489	468	439	401	357	308	260	212	169	131	101	75	56	41	29	20	15	11
100%	100%	98%	94%	88%	80%	71%	62%	52%	42%	34%	26%	20%	15%	11%	8%	6%	4%	3%	2%

Intensities in 0° c-plane

0°	2°	4°	6°	8°	10°	12°	14°	16°	18°	20°	22°	24°	26°	28°	30°	32°	34°	36°	38°
500	499	489	468	439	401	357	308	260	212	169	131	101	75	56	41	29	20	15	11
100%	100%	98%	94%	88%	80%	71%	62%	52%	42%	34%	26%	20%	15%	11%	8%	6%	4%	3%	2%

Intensities in 180° c-plane

0°	2°	4°	6°	8°	10°	12°	14°	16°	18°	20°	22°	24°	26°	28°	30°	32°	34°	36°	38°
500	493	478	457	427	392	350	306	259	215	173	135	104	78	58	42	30	21	15	11
100%	99%	96%	91%	85%	78%	70%	61%	52%	43%	35%	27%	21%	16%	12%	8%	6%	4%	3%	2%

Intensities in 180° c-plane

0°	2°	4°	6°	8°	10°	12°	14°	16°	18°	20°	22°	24°	26°	28°	30°	32°	34°	36°	38°
500	493	478	457	427	392	350	306	259	215	173	135	104	78	58	42	30	21	15	11
100%	99%	96%	91%	85%	78%	70%	61%	52%	43%	35%	27%	21%	16%	12%	8%	6%	4%	3%	2%

Beam angle 50%	Field angle 10%	Cutoff angle 2,5%	Intensity ratio in 120° cone	Intensity ratio in 90° cone
32,8°	57,6°	74,1°	100,0%	99,9%